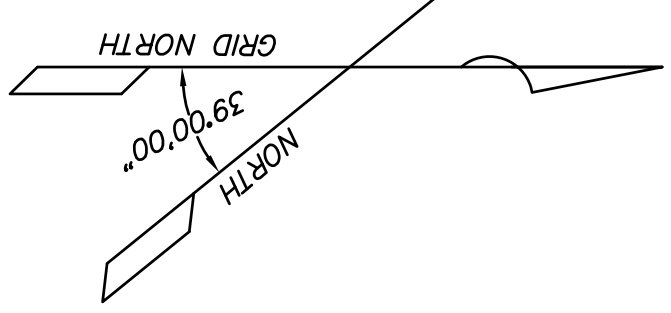
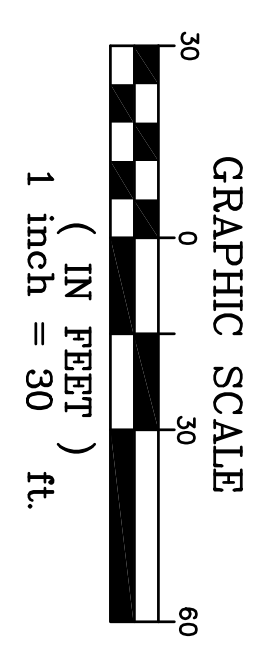
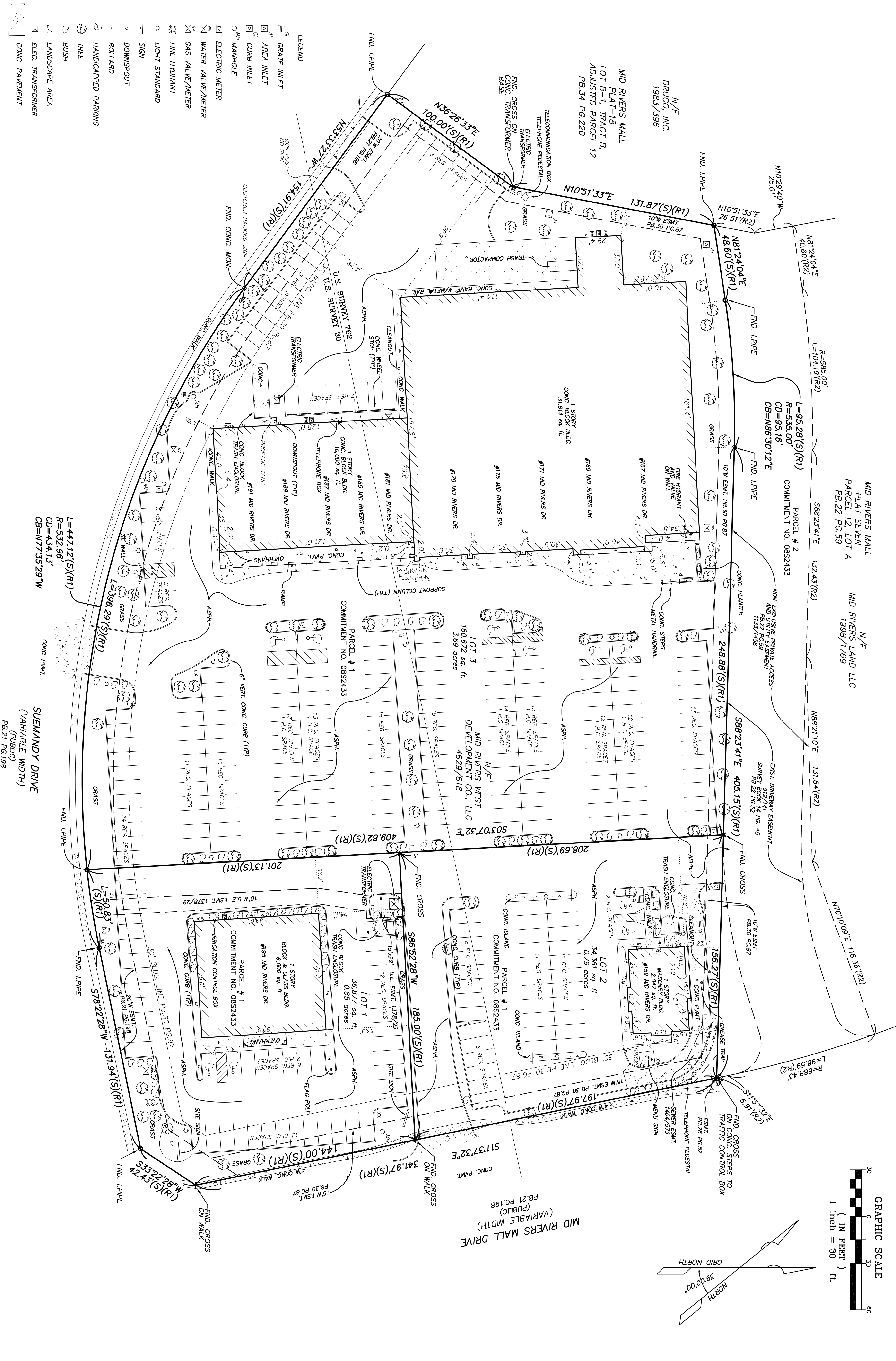


ALTA/ACSM LAND TITLE SURVEY

A TRACT OF LAND BEING LOTS 1, 2 AND 3 OF MID RIVERS MALL PLAT SEVENTEEN AS RECORDED IN PLAT BOOK 30 PAGE 87, BEING A RESUBDIVISION OF PART OF PARCEL 12 OF MID RIVERS MALL AS RECORDED ON PLAT BOOK 21, PAGES 198-199, OF THE ST. CHARLES COUNTY, RECORDERS OFFICE.



- LEGEND**
- AI GRAVE INLET
 - AI AREA INLET
 - CI CURB INLET
 - OH MANHOLE
 - EM ELECTRIC METER
 - WM WATER VALVE/METER
 - GM GAS VALVE/METER
 - FM FIRE HYDRANT
 - LS LIGHT STANDARD
 - SI SIGN
 - DS DOWNSPOUT
 - BOLLARD
 - HP HANDICAPPED PARKING
 - TREE
 - BUSH
 - LA LANDSCAPE AREA
 - ELEC. TRANSFORMER
 - CONC. PAVEMENT

ALTA/ACSM LAND TITLE SURVEY
LOTS 1, 2 & 3
MID RIVERS MALL PLAT SEVENTEEN

Prepared For:
 PROSPECT GROVE, LLC
 C/O CADRE DEVELOPMENT, LLC

10560 OLD OLIVE, SUITE 500
 ST. LOUIS, MO. 63141
 (314) 997-4100

PICKETT, RAY & SILVER INC.
 CIVIL ENGINEERING, LAND SURVEYING,
 AND NATURAL RESOURCES SERVICES

New Town **St. Peters** **Branson**
 3320-1 Rue Royale 333 Mid Rivers Mall Drive 3027 W. Hwy 76, Suite B
 St. Charles, MO 63301 St. Peters, MO 63376 Branson, Mo 65616

Phone (636) 397-1211 Fax (636) 397-1104
 www.prs3.com 1-800-708-3918

REVISIONS		DESCRIPTION	
NO.	DATE		
1	08-21-08	REVISED PER UP-DATED TITLE COMMITMENT	

DRAWN	W.D.S.	DATE	07-31-08
CHECKED	K.X.X.	DATE	XX/XX/XX
PROJECT # 76060.P/LC.005		FIELD 335E	
TASK # 1		BOOK 335G1	

ALTA/ACSM
 LAND TITLE SURVEY
 SHEET 2 OF 2

Copyright 2008 by Pickett, Ray & Silver Inc.